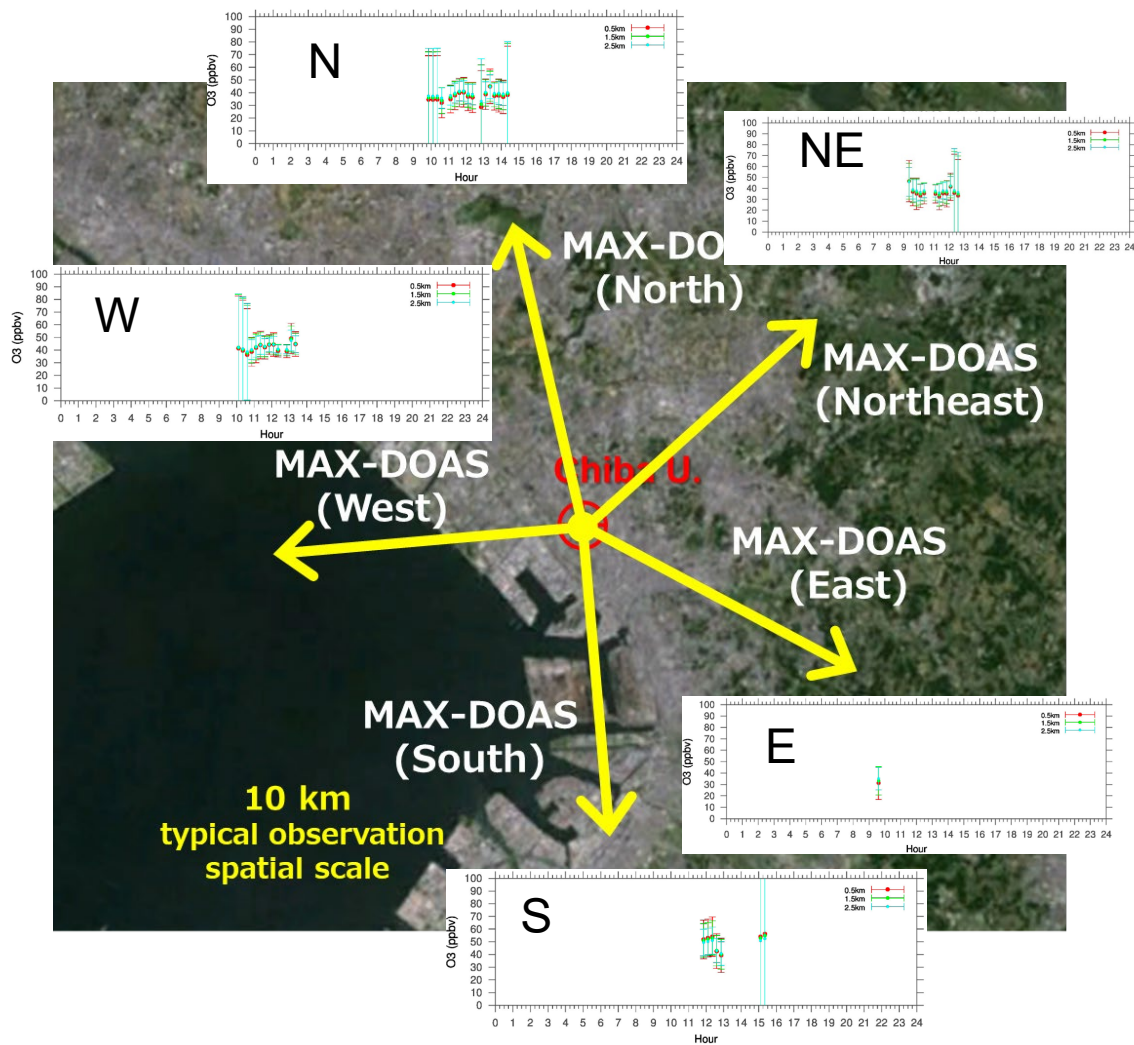
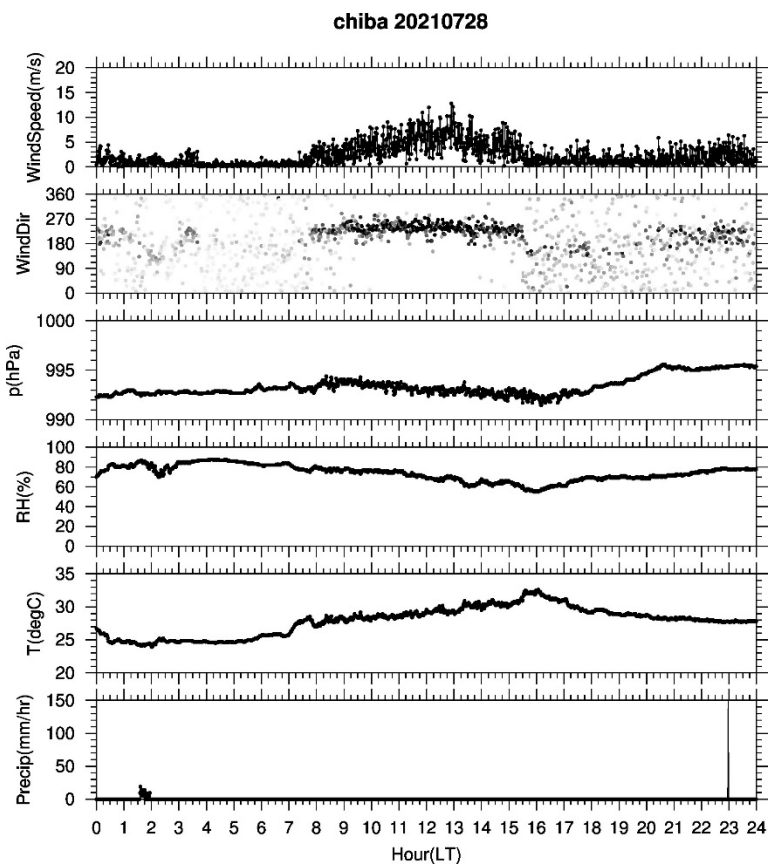
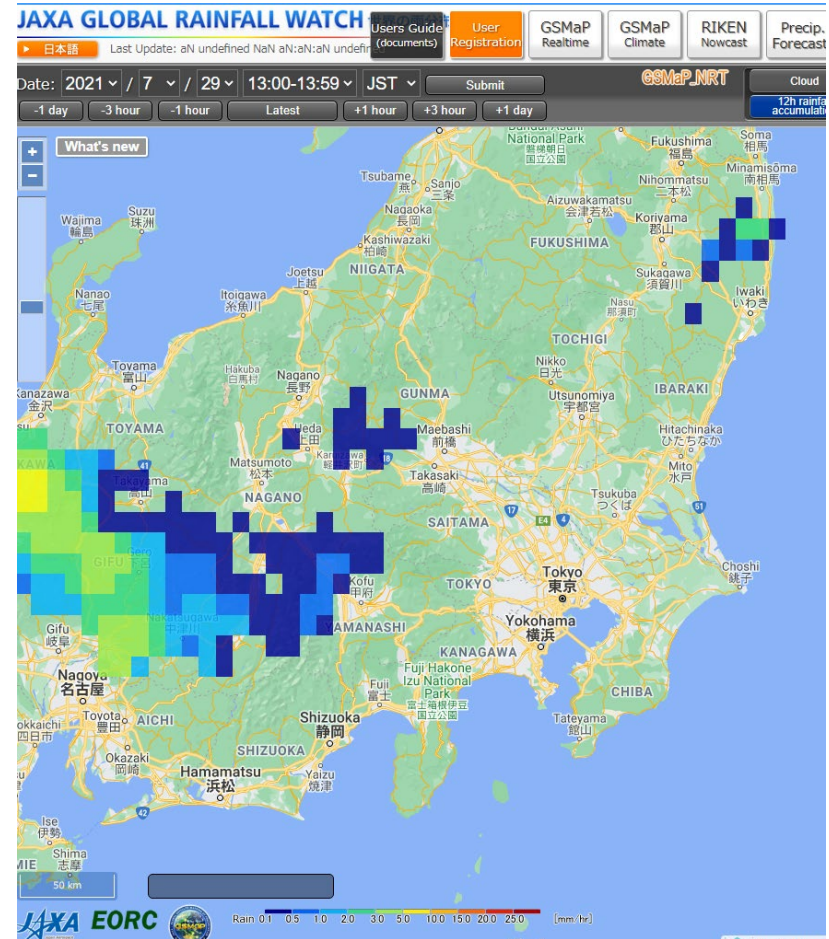
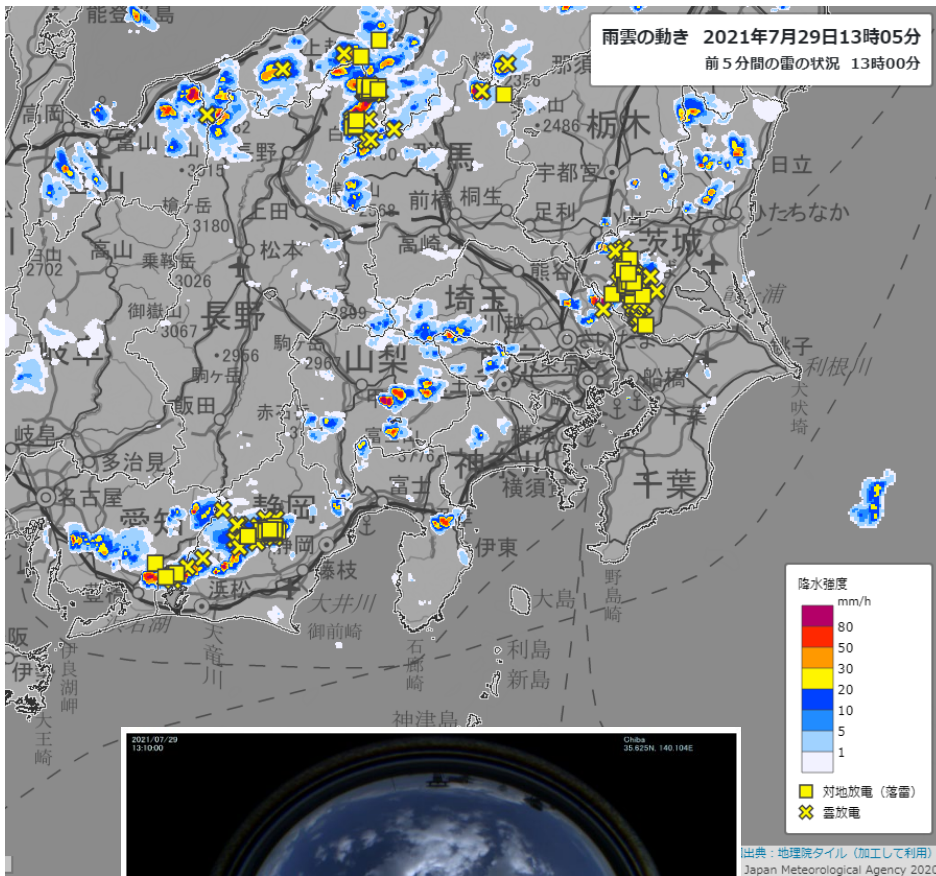


Analysis for 20210728



southwest wind → maritime air → low ozone (<~50 ppbv)

Cumulus convection and lightning activity

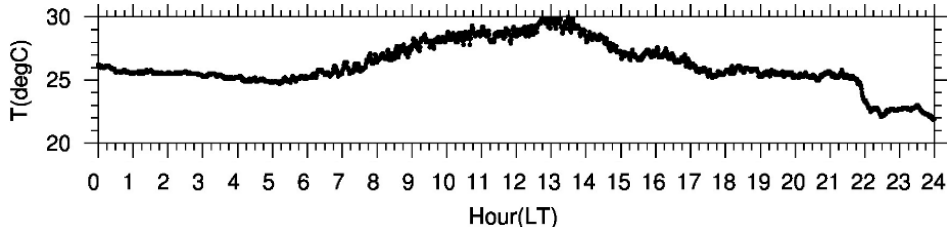


seem hard to say that JAXA GSMap reproduced the real-world well for this case...

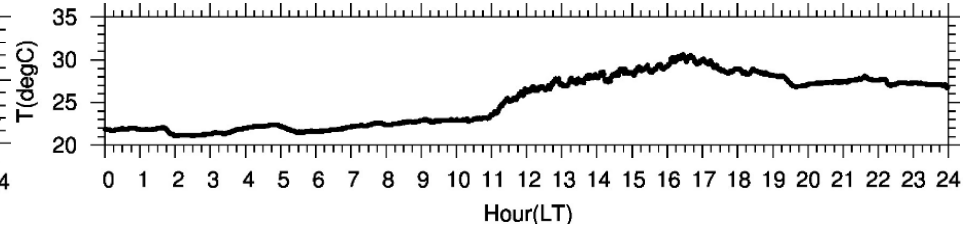
Air temperature & LST (Yamamoto-san)

20210726

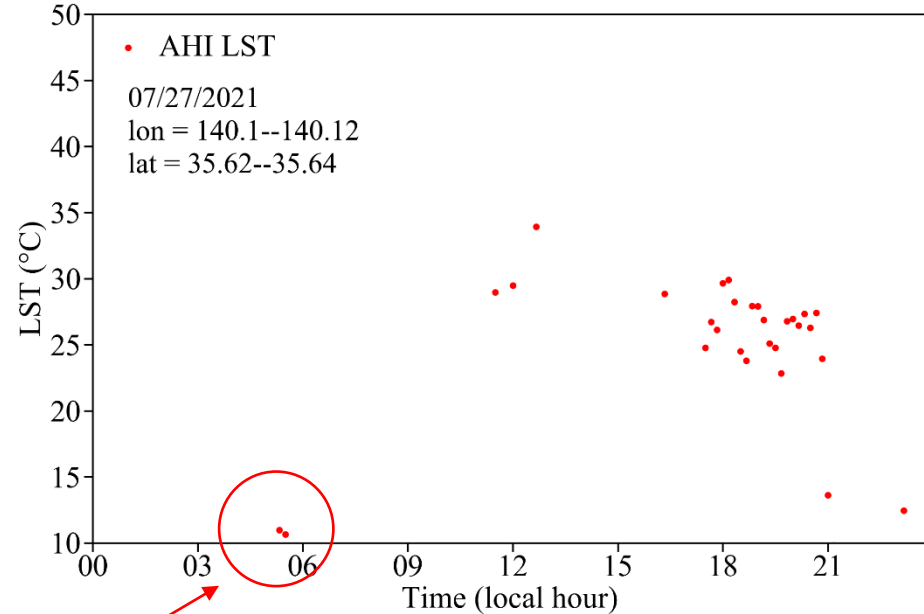
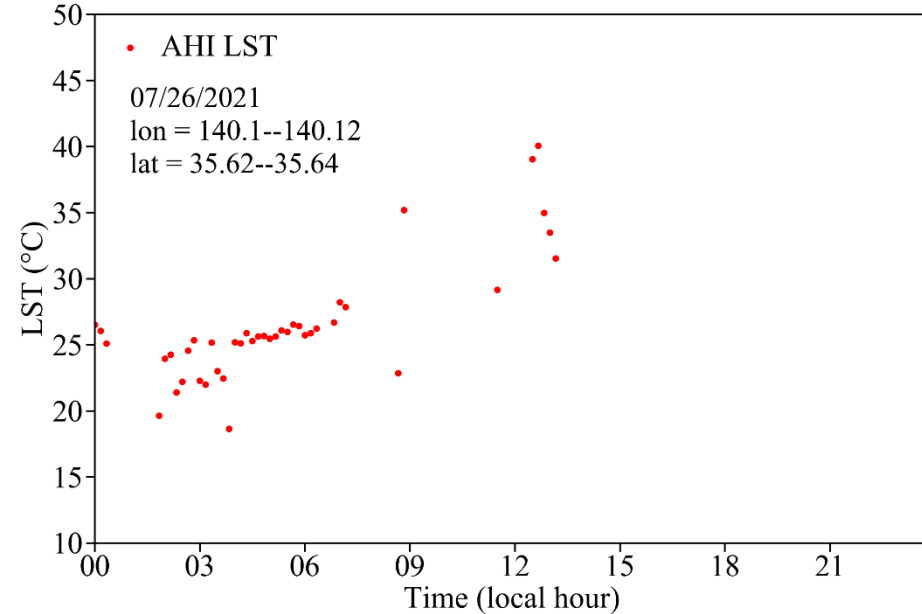
Temperature



20210727



LST



rain occurred at Chiba Univ.